

# BG-CP

## Control Panel

SPEC SHEET



## OVERVIEW

The BG-CP (Control Panel) is an important and convenient way to display and monitor bilge pump functions at the bridge of the vessel. All the essential functions of alarms and controls are at the crew's finger tips.

The control panel displays oil and high water detection LEDs with an accompanying 97 dBA sound output audio alarm. The BG-CP includes an easy to read bilge pump counter with a reset button and fuse holder located on the front panel. The illuminated three position pump switch has an OFF, Auto, and Manual override function.

## FEATURES

### LED Display

High water detected, oil detected, and pump running

### Pump Counter

Number of times pump ran (up to 99), with Reset button

### Audio Alarm

Audible 97 dB alarm, with Mute button

### Bilge Pump Switch

Off, Auto, Manual

### Rear Electrical Board

With detailed labels

### Voltage Compatibility

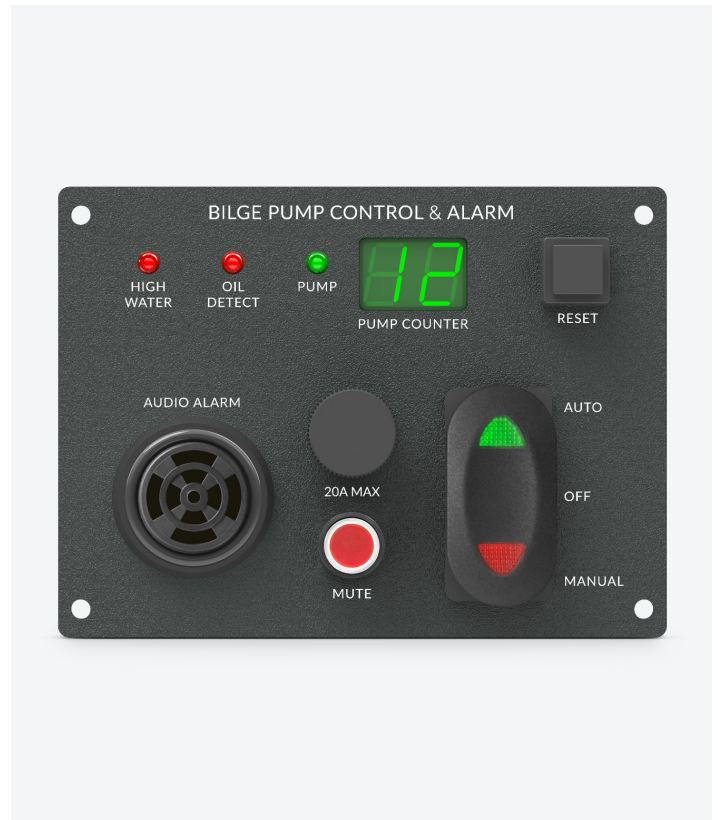
12 or 24 Vdc

### Operations

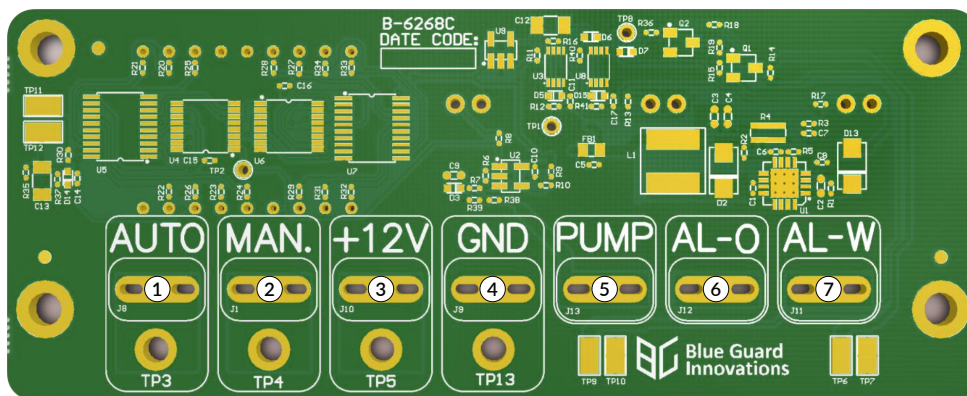
Up to 20 amps

### Dimensions

(L x W x H) – 5.4 in x 2.5 in x 4.0 in



## REAR ELECTRICAL BOARD



- ① **AUTO**  
Pump Auto Control
- ② **MAN.**  
Pump Manual Control
- ③ **+12V**  
12 or 24 Vdc Power
- ④ **GND**  
Supply Negative
- ⑤ **PUMP**  
Pump Power
- ⑥ **AL-O**  
Oil Detect Alarm
- ⑦ **AL-W**  
High Water Alarm